



Scan for full manual

## VIA Campus<sup>2</sup> PLUS Quick Start Guide For Installer

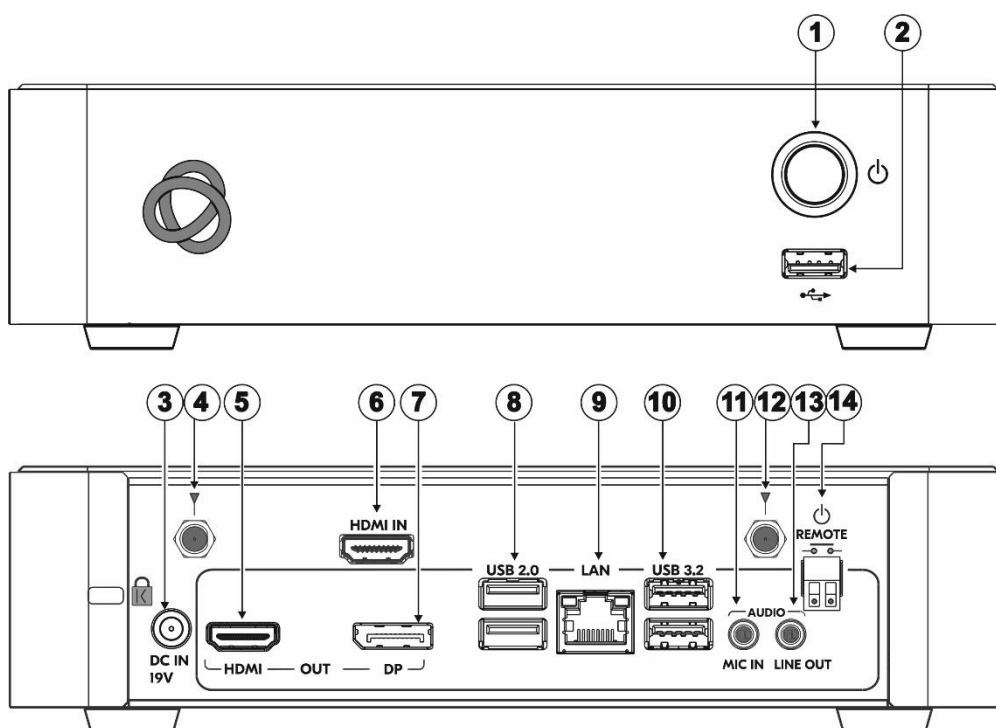
This guide helps you install and configure your VIA Campus<sup>2</sup> PLUS for the first time.

Go to [www.kramerav.com/product/VIA Campus<sup>2</sup> PLUS](http://www.kramerav.com/product/VIA_Campus2_PLUS) to download the latest user manual and check if firmware upgrades are available.

### Step 1: Check what's in the box

- ✓ VIA Campus<sup>2</sup> PLUS Collaboration Device
- ✓ HDMI cable extender (M to F)
- ✓ 2 Wi-Fi antennas
- ✓ 1 Power adapter (19V DC)
- ✓ 1 Quick start guide

### Step 2: Get to know your VIA Campus<sup>2</sup> PLUS



#	Feature	Function
1	Power Button	For turning the unit on and off.
2	USB 2.0 Connector	For upgrading firmware or connecting a USB device.
3	DC IN 19V Connector	Connects to the 19V DC power adapter.
4	Wi-Fi Antenna Port (1 of 2)	Connect one of the Wi-Fi antennas for collaborating via the built-in Wi-Fi.
5	HDMI OUT Connector	Connect to an HDMI display.
6	HDMI IN Connector	Connect to an HDMI source (for example, a laptop).
7	DP OUT Connector	Connect to a DisplayPort display.
8	USB 2.0 connectors	Connect to up to 2 USB devices.
9	LAN RJ-45 Connector	Connect a Local Area Network (LAN) cable.
10	USB 3.2 connectors	Connect to up to 2 USB devices.
11	AUDIO MIC IN 3.5mm Mini Jack	Connect to a microphone.
12	Wi-Fi Antenna Port (2 of 2)	Connect one of the Wi-Fi antennas for collaborating via the built-in Wi-Fi.
13	AUDIO LINE OUT 3.5mm Mini Jack	Connect to an unbalanced stereo audio acceptor.
14	REMOTE 2-pin Terminal Block	Connect to a toggle switch to remotely turn the device on and off.

## Step 3: Mount VIA Campus<sup>2</sup> PLUS

Install VIA Campus<sup>2</sup> PLUS using one of the following methods:

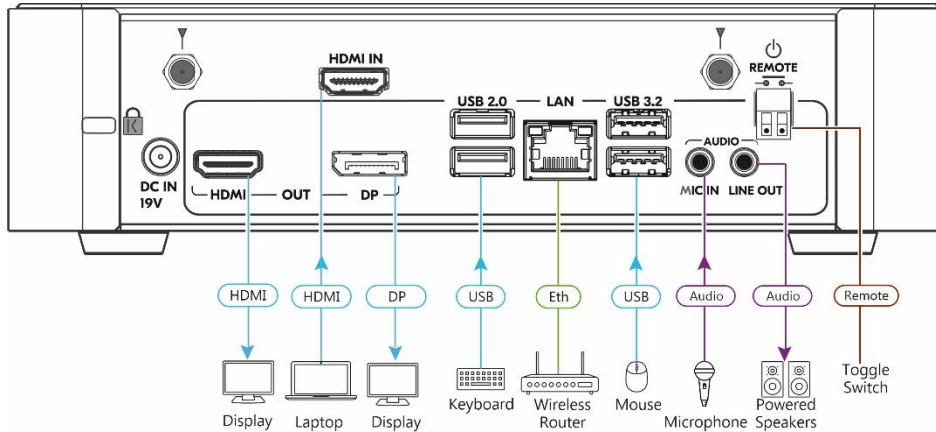
- Mount the unit in a rack using the recommended rack adapter (see [www.kramerav.com/product/VIA Campus<sup>2</sup> PLUS](http://www.kramerav.com/product/VIA Campus<sup>2</sup> PLUS)).
- Place the device on a flat surface.



Ensure that the environment (e.g., maximum ambient temperature & air flow) is compatible for the device. Avoid uneven mechanical loading. Appropriate consideration of equipment nameplate ratings should be used for avoiding overloading of the circuits. Reliable earthing of rack-mounted equipment should be maintained.

## Step 4: Connect inputs and outputs

Always switch OFF the power on each device before connecting it to your VIA Campus<sup>2</sup> PLUS.



1. Connect the keyboard and mouse to the USB ports.
2. Connect an HDMI display and/or a DisplayPort display to the OUT ports.
3. Connect a laptop or other HDMI source to the HDMI IN port.
4. Connect a Local Area Network (LAN) cable for connection to your network.
5. Connect the Wi-Fi antennas for using the built-in wireless capability.
6. Connect powered speakers and a microphone.



To achieve specified extension distances, use Kramer cables available at [www.kramerav.com/product/VIA Campus<sup>2</sup> PLUS](http://www.kramerav.com/product/VIA Campus<sup>2</sup> PLUS). Using third-party cables may cause damage!

## Step 5: Connect power

Connect the 19V DC power adapter to VIA Campus<sup>2</sup> PLUS and plug it into the mains electricity.



- Caution:** There are no operator serviceable parts inside the unit.
  - Caution:** The device is intended to be installed at a height of 2 meters or less.
  - Warning:** Use only the Kramer Electronics power adapter that is provided with the unit.
  - Warning:** Disconnect the power and unplug the unit from the wall before installing.
- See [www.KramerAV.com](http://www.KramerAV.com) for updated safety information.

## Step 6: Configure VIA Campus<sup>2</sup> PLUS

A wizard guides you through configuration. For more information about configuration see “**For Web Administrator: Gateway Management pages**” in the User Manual.

If you choose to skip the wizard, follow these steps for configuration:

1. Click the VIA tile at the bottom left of the screen: The Gateway Dashboard will open.
2. On the **Kramer Gateway Dashboard**, click **Settings**: The settings login window appears.
3. Enter the User Name (default = su) and Password (default = supass) and click **Login**: The VIA Settings window appears.

The VIA Settings tabs are:

- LAN Settings – Configure network parameters (default = DHCP allocated IP).
- System Controls – Manage your display and audio settings.
- Wifi – Choose between **AP Mode** and **Client Mode**: AP Mode sets the VIA Campus<sup>2</sup> PLUS as an independent Wi-Fi network, Client Mode connects the VIA Campus<sup>2</sup> PLUS to an existing Wi-Fi network, making it a secondary access point for guests.

4. When you have finished configuring settings, click **Reboot** to apply all settings.

VIA

Login:

User Type:  Super User  General User

User Name:

Password:



Scan for full manual

## VIA Campus<sup>2</sup> PLUS Quick Start Guide For User

This guide helps you participate in a meeting with your VIA Campus<sup>2</sup> PLUS for the first time.

Go to [www.kramerav.com/product/VIA Campus<sup>2</sup> PLUS](http://www.kramerav.com/product/VIA_Campus2_PLUS) to download the latest user manual.

### Step 1: Connect your personal device to the proper network

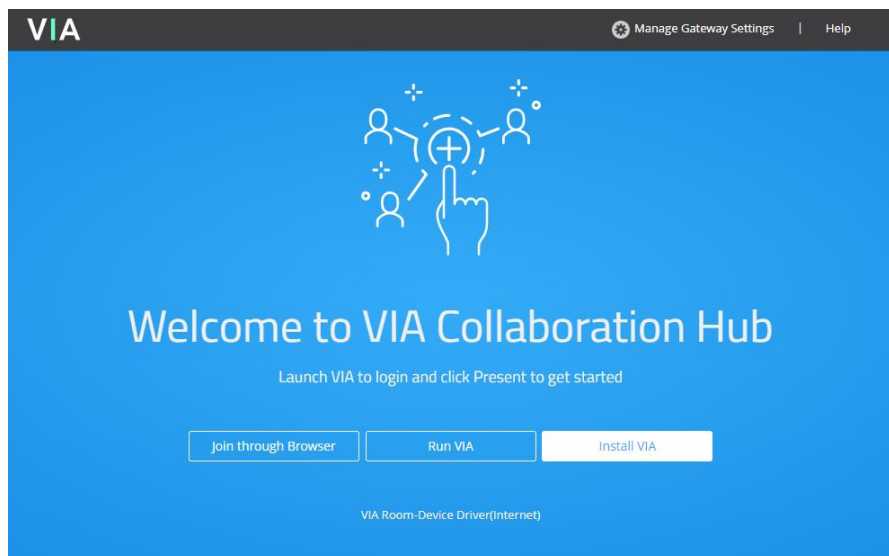
Connect your personal device to the built-in VIA Campus<sup>2</sup> PLUS Wi-Fi network or to the same LAN / Wi-Fi network used by the specific VIA Campus<sup>2</sup> PLUS device in your meeting room.

### Step 2: Run or download the Kramer VIA app

See “Installing or Running the VIA app” in the User Manual.

For Mac or Windows

1. Enter the Room Name of the VIA Campus<sup>2</sup> PLUS device into your computer's browser. The Welcome page appears.



Download Android  
VIA app



Download iOS  
VIA app

2. Click **Run VIA** to execute the **Kramer VIA** app without downloading it (for guests using VIA temporarily).  
OR click **Install VIA** to download the **Kramer VIA** app onto your computer (for regular users of VIA).
3. Click **VIA Room-Device Driver(Internet)** – The link is below Run VIA - If you want to use peripheral devices such as a room's camera, microphone or speaker, this installs driver software (previously known as Versa) to connect the devices to the VIA app. The driver only needs to be installed once and can also be downloaded from the VIA app.

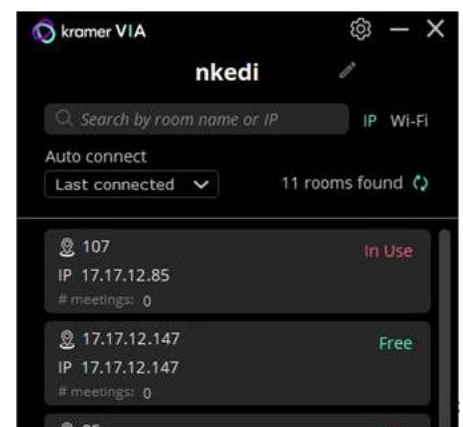
For iOS or Android devices: Download and install the free **Kramer VIA** app from Apple App Store or Google Play.

For Chromebook or Chrome Browser: Click **Join through browser** on the Welcome page.

### Step 3: Join the meeting using Kramer VIA App

See “Joining a Room with the VIA app” in the User Manual.

1. Open the Kramer VIA app and select the room to which you want to connect. The Room code window appears.
2. In the Room Code field, enter the 4-digit code as it appears on the main display (if enabled).
3. You are logged into the VIA meeting. The VIA Dashboard (and taskbar icon for laptops) appears on your device screen.

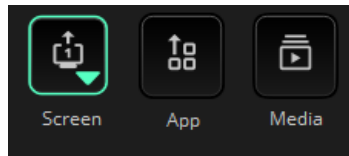


## Step 4: Using the VIA dashboard menu

For more information see “Presenting from the VIA User Dashboard” in the User Manual.

1. Select what you want to share:

- **Screen** – Share your screen. On Windows the down arrow adds the Main display as a second screen.
- **App** – Share a window or app that you are using.
- **Media** – Share (stream) a media file.
- **HDMI** – Use a physical HDMI connection to display your screen.

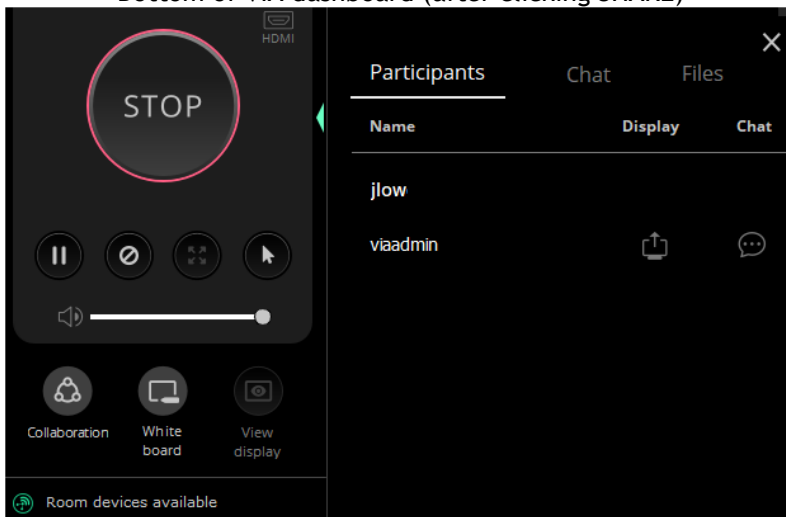


2. Click SHARE:

- The SHARE button becomes the STOP button.
- Your screen, app or media will be displayed to meeting participants on the main display.

3. Click the green arrow on the right to view participants, chat or send files.

Bottom of VIA dashboard (after clicking SHARE)



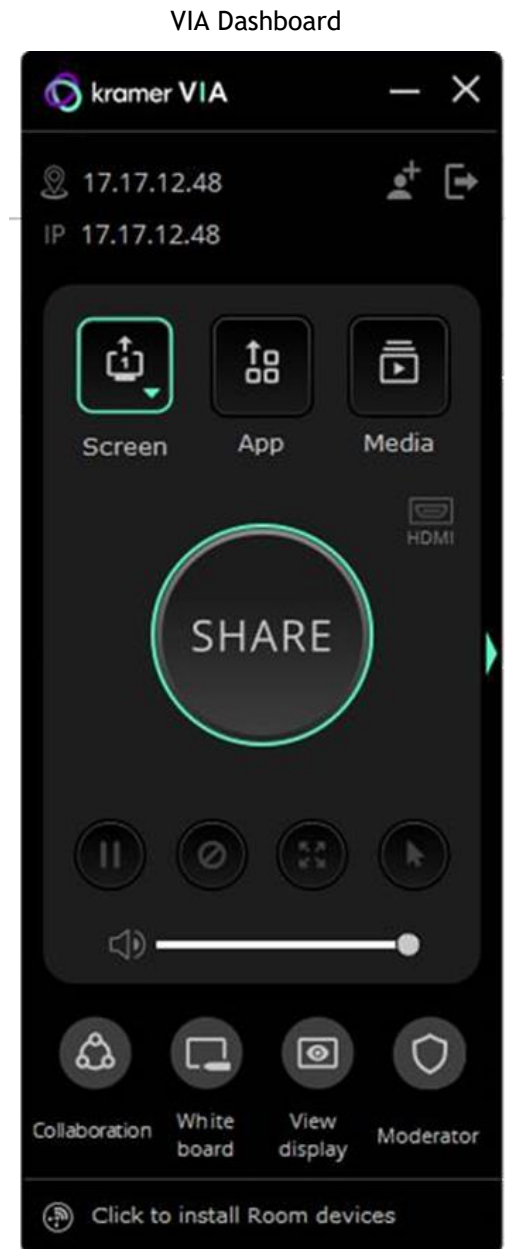
4. Use the buttons below STOP to control sharing (active buttons are green):

- **Pause sharing** –Your screen freezes on the main display (the VIA app is minimized).
- **Present privately**—No one else can present (was “Do Not Disturb”).
- **Remove other presenters.**
- **Allow remote control** – Enable other users to control your device (you must first press the Collaboration button).

5. Use the buttons at the bottom for collaboration with other participants:

- **Collaboration** – Adds a mouse icon with your name on the main display, colored blue if collaborating.
- **White board** – Opens drawing / annotation controls on the main display, colored green if active.
- **View display** – View a copy of the Main Display on your personal device (not if presenting).
- **Moderator** – Visible if Moderating is permitted, orange when moderating.

6. Click STOP to end sharing.



Specifications are subject to change without notice at [www.kramerav.com](http://www.kramerav.com)

The terms HDMI, HDMI High-Definition Multimedia Interface, and the HDMI Logo are trademarks or registered trademarks of HDMI Licensing Administrator, Inc.